

# iOC 4.5 Software Upgrade

For iOC 4.05



10/24/2012

iTero™



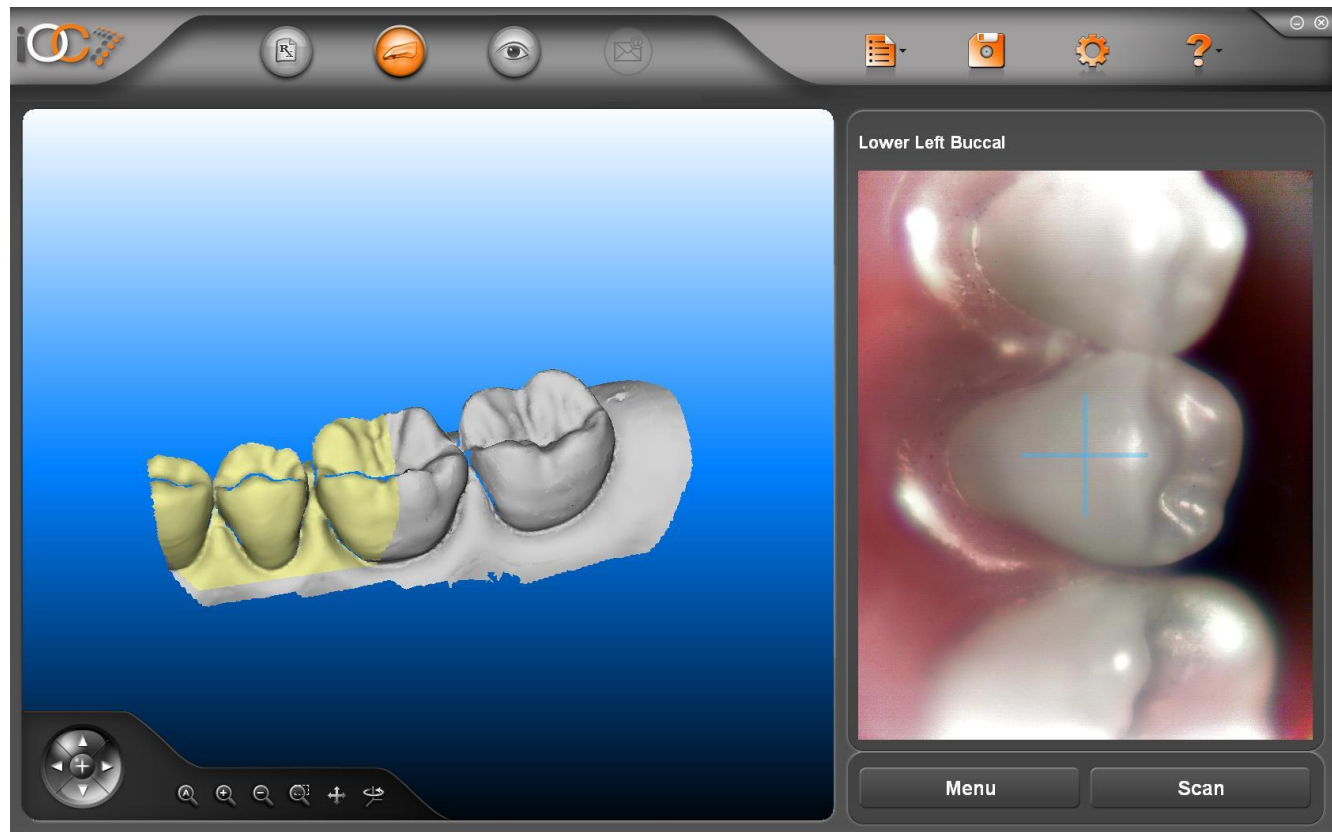
# Overview

- No changes have been made to the Rx form
- Same user interface design with updated features
  - Registration algorithm enhancements
  - Correcting of unregistered scans
  - Automatic Foot Pedal Exit
  - New exception messaging
- MyAligntech
  - Quick tips for checking case status in MyAligntech

10/24/2012

# Registration Algorithm Enhancements

- Unification of buccal and lingual registration
  - Registration will automatically overlap between the previous scan and the buccal/lingual scans for improved stitching



10/24/2012

# Registration Algorithm Enhancements

- **Unregistered Scans**

- Scans that do not stitch to the main model will continue to be shown in upper left corner . When possible these scans will stitch to each other. This makes identifying the corrective scan easier for the end user.

Taking an occlusal shot of the second molar would allow for proper stitching to the main model.



10/24/2012

# Automatic Foot Pedal Exit

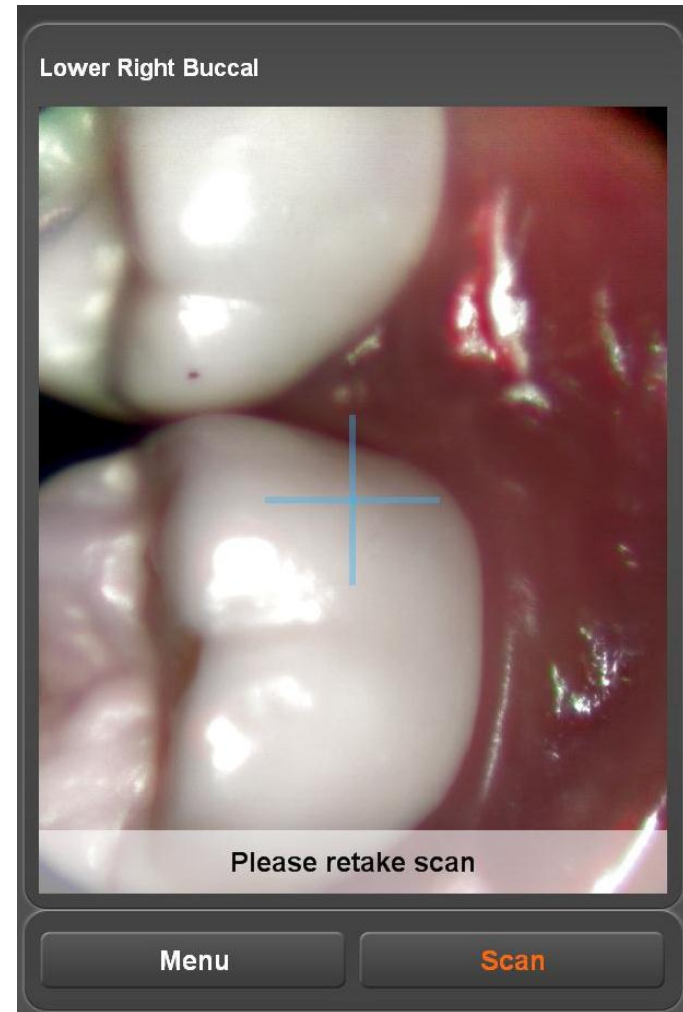
- 5 second safeguard for menu selections



10/24/2012

# Exception Messaging

- **New exception messaging**
  - when scan is unsuccessful due to movement the system will provide a tone and visual note in the scanning window to retake the scan

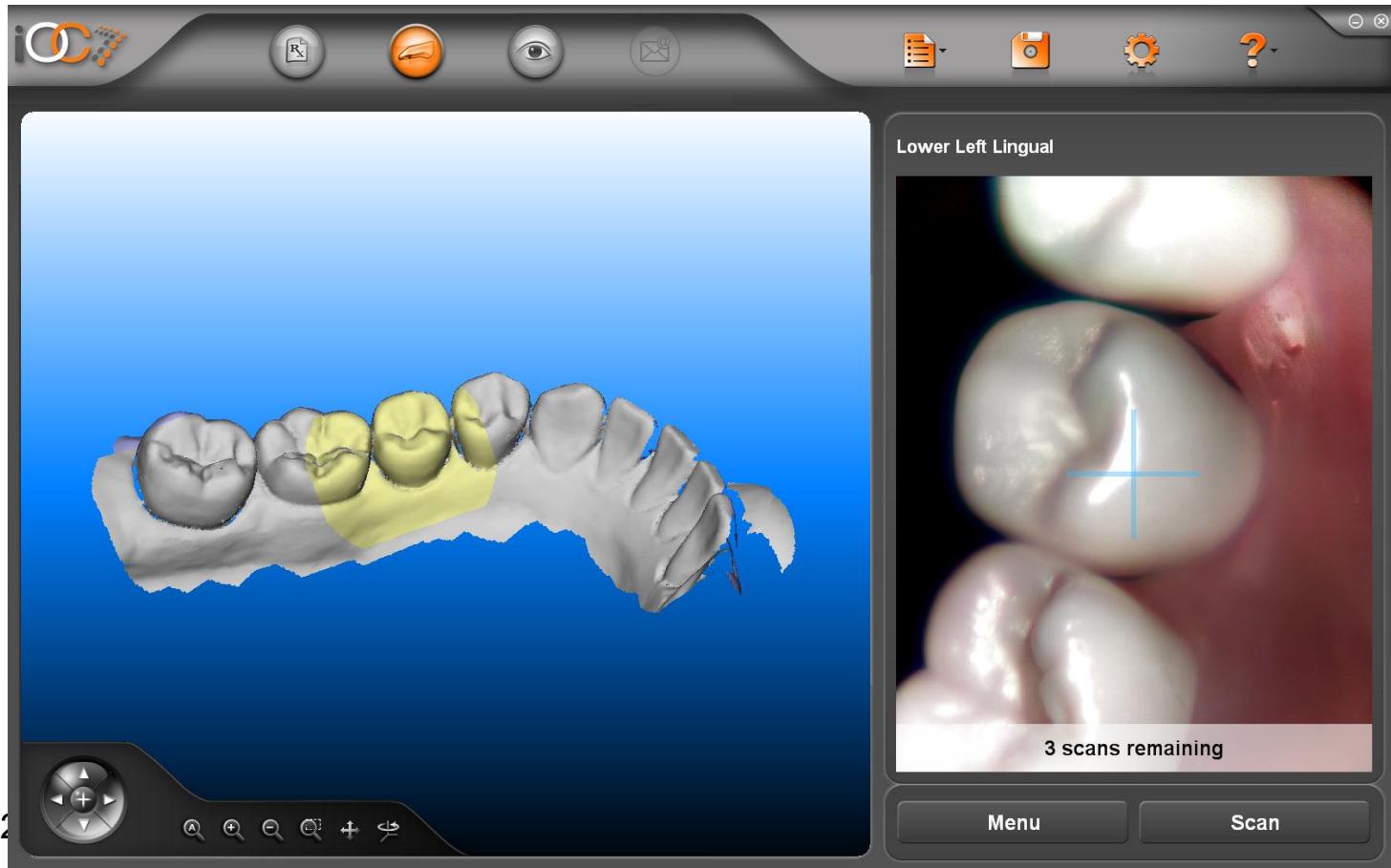


10/24/2012

# Exception Messaging

- Scan Remaining Countdown

- Proactive countdown when 3 scans remain in segment



10/24/2012

# MyAlignntech

- Sign in by using your email address and your password

MYALIGNTECH

iTero™ iOC™ OrthoCAD®

Email:

Password:



Remember username

[Forgot Your Password?](#)



[Invisalign Doctor Site >>](#)

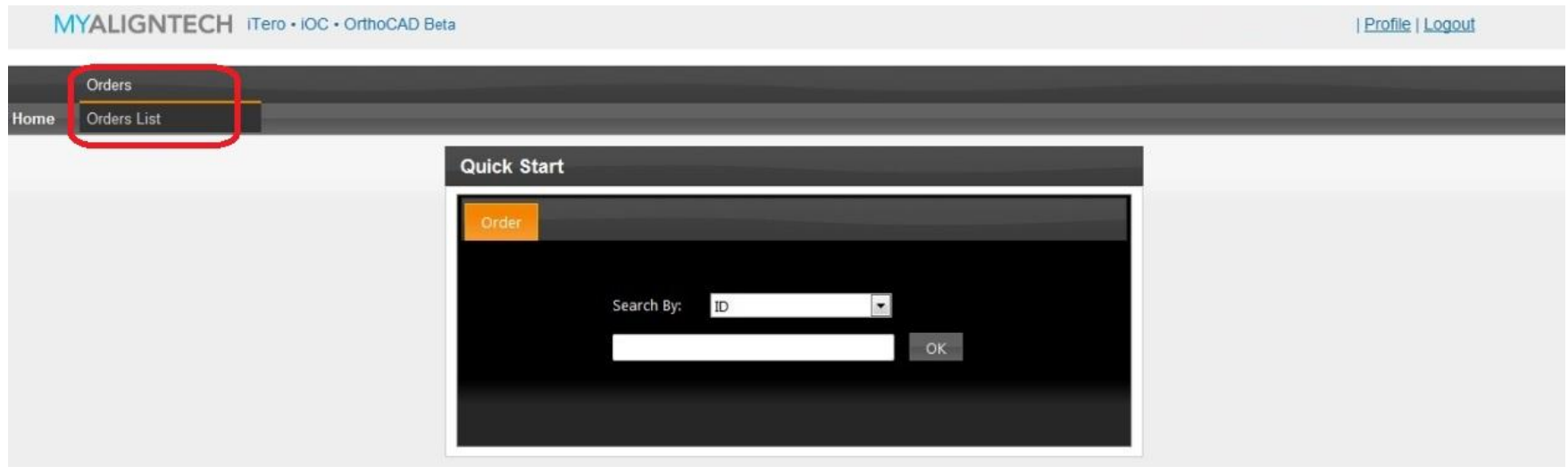
[Not yet an Invisalign provider?](#)

See how other professionals are using Invisalign to satisfy their patients and grow their practices. [>>](#)

10/24/2012

# MyAligntech

- On the Quick Start Page click on the orders tab



© 2012 Align Technology, Inc. All rights reserved. [Terms](#) | [Support](#)

10/24/2012

- Check Status of Case

MYALIGNTECH iTero • iOC • OrthoCAD Beta [Profile](#) | [Logout](#)

Orders Production

Home > Orders > Orders List

Clinical Orders List Apply Reset Export

Company:  Date Range:

Order ID	Order No	Order Type	Order Status	Order By	Order Desc	Ship To	Order Date	Acquisition Date	Due Date	Date Updated	State	Case Type
5299513	5RWK18	Test	Test	Align Orthodontics (San Jose)	Align, Dental	Align Orthodontics (San Jose)	2012/07/24	2012/07/24	2012/07/24	2012/07/24	Doctor Download	Invisalign
5297153	5RU3XX	Test	Test	Align Orthodontics (San Jose)	Align, Dental	Align Orthodontics (San Jose)	2012/07/23	2012/07/23	2012/07/23	2012/07/23	Doctor Download	Invisalign
5296918	5RTWA6	Test	Test	Align Orthodontics (San Jose)	Align, Dental	Align Orthodontics (San Jose)	2012/07/23	2012/07/23	2012/07/23	2012/07/23	Doctor Download	Invisalign
5292426	5RN6EX	Test	Test	Align Orthodontics (San Jose)	Align, Dental	Align Orthodontics (San Jose)	2012/07/19	2012/07/19	2012/07/19	2012/07/19	Doctor Download	Invisalign
5284817	5RD8ZN	Test	Test	Align Orthodontics (San Jose)	Align, Dental	Align Orthodontics (San Jose)	2012/07/16	2012/07/16	2012/07/16	2012/07/16	Doctor Download	Invisalign
5284370	5RCUJH	Test	Test	Align Orthodontics (San Jose)	Align, Dental	Align Orthodontics (San Jose)	2012/07/16	2012/07/16	2012/07/16	2012/07/16	Doctor Download	Invisalign
5279033	5R68D6	Test	Test	Align Orthodontics (San Jose)	Align, Dental	Align Orthodontics (San Jose)	2012/07/12	2012/07/12	2012/07/12	2012/07/12	Doctor Download	Invisalign
5271756	5PYPNK	Test	Test	Align Orthodontics (San Jose)	Align, Dental	Align Orthodontics (San Jose)	2012/07/09	2012/07/09	2012/07/16	2012/07/12	Completed	iCast
5259012	5PHEJA	Test	Test	Align Orthodontics (San Jose)	Align, Dental	Align Orthodontics (San Jose)	2012/06/28	2012/06/28	2012/06/28	2012/06/28	Doctor Download	Invisalign
5254516	5PCSHD	Test	Test	Align Orthodontics (San Jose)	Align, Dental	Align Orthodontics (San Jose)	2012/06/26	2012/06/26	2012/06/26	2012/06/26	Doctor Download	Invisalign

10/24

# Summary

- No changes have been made to the Rx form
- Same user interface design with updated features
  - Registration algorithm enhancements
  - Correcting of unregistered scans
  - Automatic Foot Pedal Exit
  - New exception messaging
- MyAligntech
  - Quick tips for checking case status in MyAligntech

10/24/2012