

4.5 Software Upgrade

For iTero 4.05



iTero™



10/23/2012

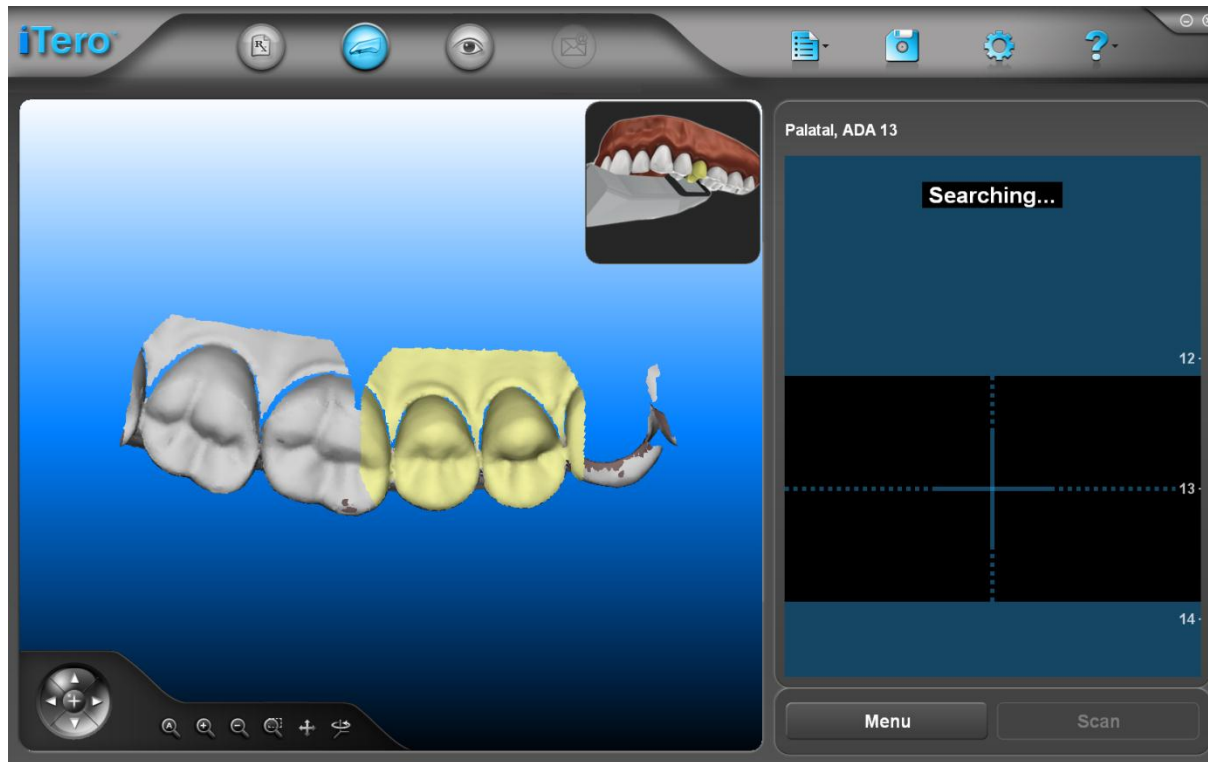
Overview

- No changes have been made to the Rx form
- Same user interface design with updated features
 - Registration algorithm enhancements
 - Correcting of unregistered scans
 - Tooth positioning guide
 - Simplified foot pedal menu
 - New exception messaging
 - Viewing of arch with preparation scans
 - Removal of scan body to capture contacts
- MyAligntech
 - Quick tips for checking case status in MyAligntech

10/23/2012

Registration Algorithm Enhancements

- Unification of buccal and lingual registration
 - Registration will automatically overlap between the previous scan and the buccal/lingual scans for improved stitching

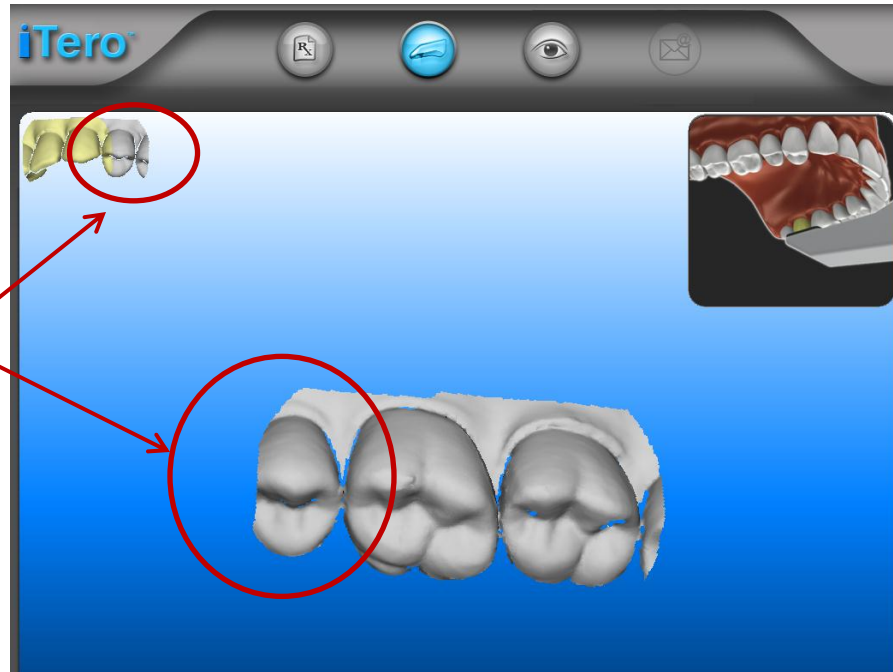


10/23/2012

Registration Algorithm Enhancements

- Unregistered Scans

- Scans that do not stitch to the main model will continue to be shown in upper left corner but, when possible these scans will stitch to each other. This makes identifying the corrective scan easier for the end user.

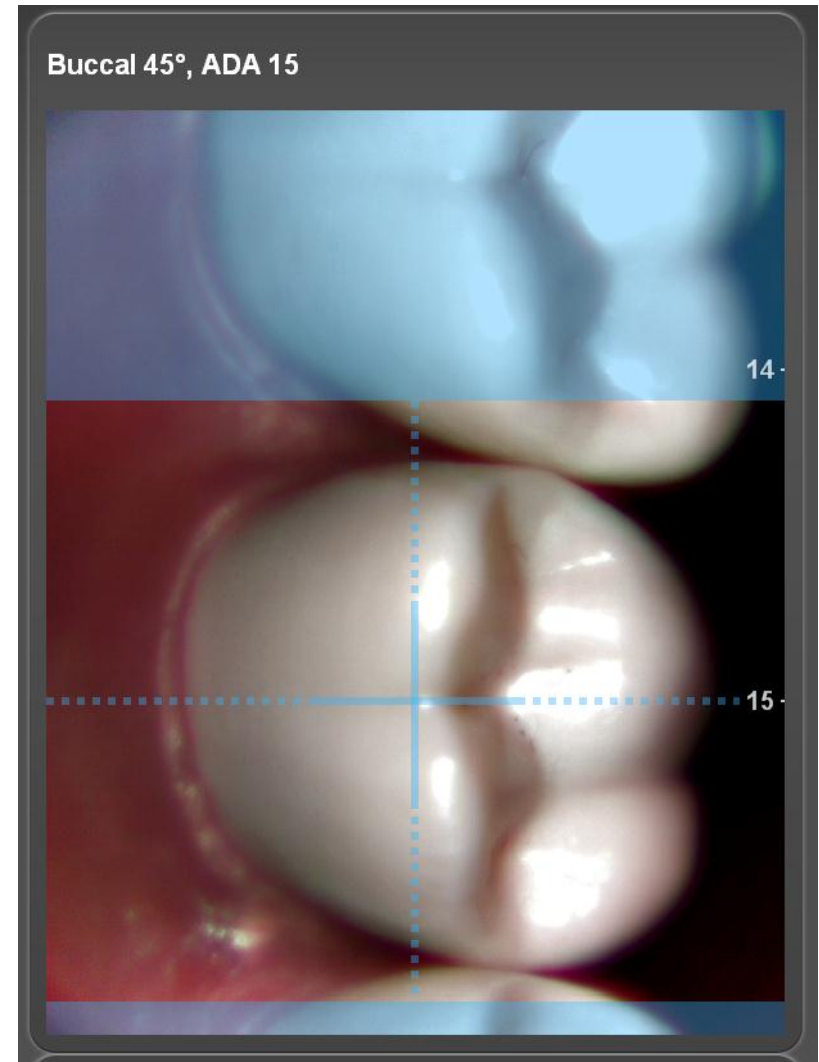


Taking an occlusal shot of the second bicuspid would allow for proper stitching to the main model.

10/23/2012

Tooth Positioning Guide

- **Tooth positioning guide**
 - Addition of translucent area with crosshair for ease of properly centering tooth being scanned
 - Ensures proper overlap for future scans
 - Tooth numbers are also visualized within the viewfinder

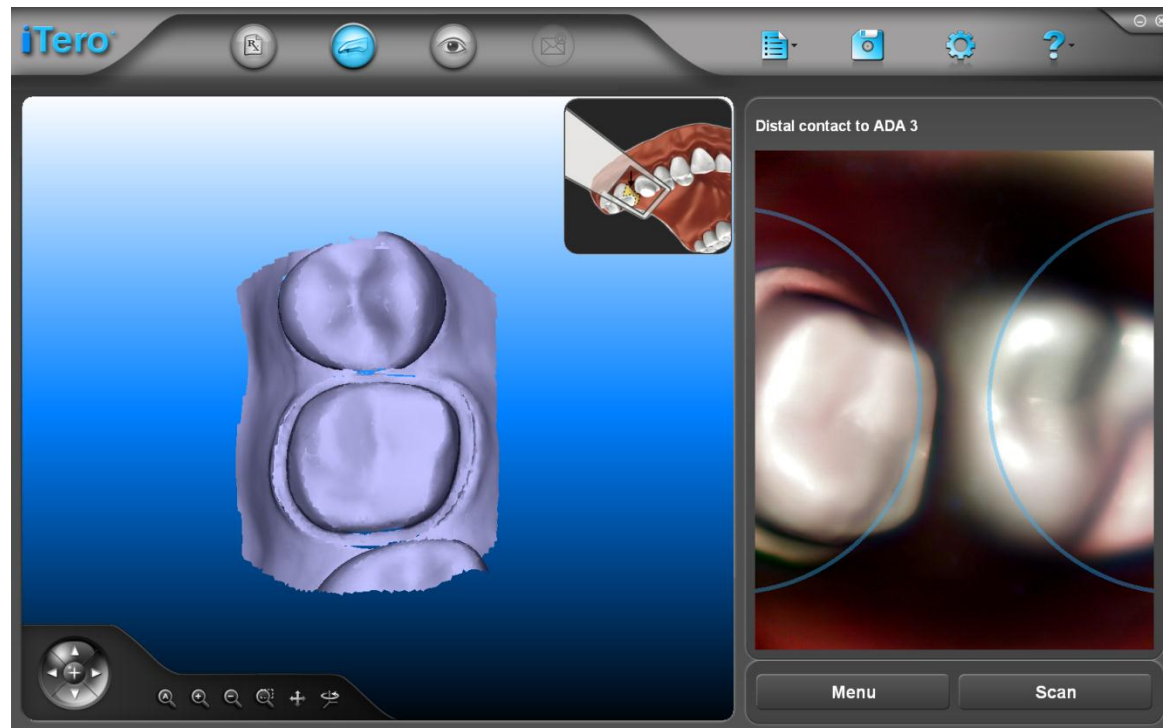


10/23/2012

Tooth Positioning Guide

- Capturing adjacent tooth contacts

- Positioning guides (blue semi-circles) placed in viewing window provide the roadmap for placement of adjacent contacts



10/23/2012

Simplified Foot Pedal Menu

- **Simplified foot pedal menu**
 - Removed unused options
 - (i.e. “Occlusal Clearance”)
 - Changed “UNDO” to “Redo Last Scan”
 - Changed “PREV” to “Previous”
- **5 second safeguard for menu selections**
 - Configurable by end-user
- **Restorative scanning**
 - Automatic transition to buccal segment after lingual segment

10/23/2012

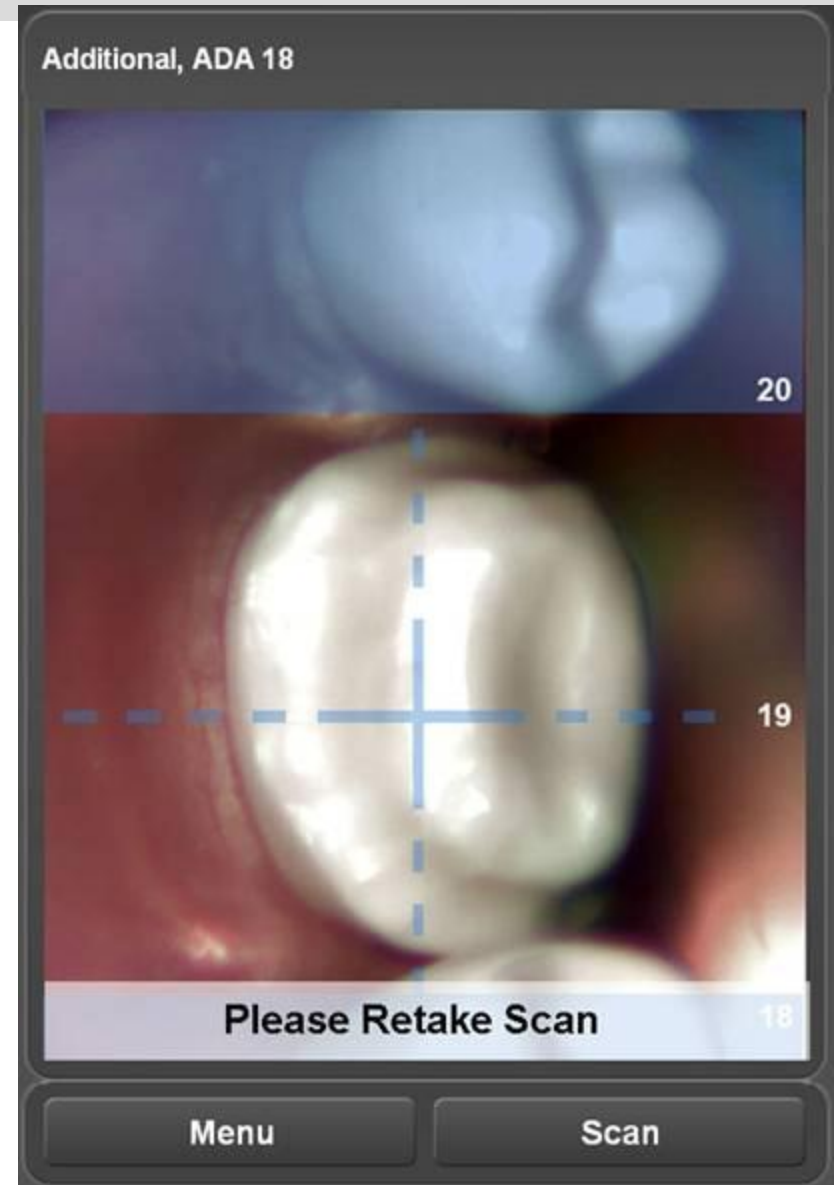


Exception Messaging

- **New exception messaging**
 - when scan is unsuccessful due to movement the system will provide a tone and visual note in the scanning window to retake the scan

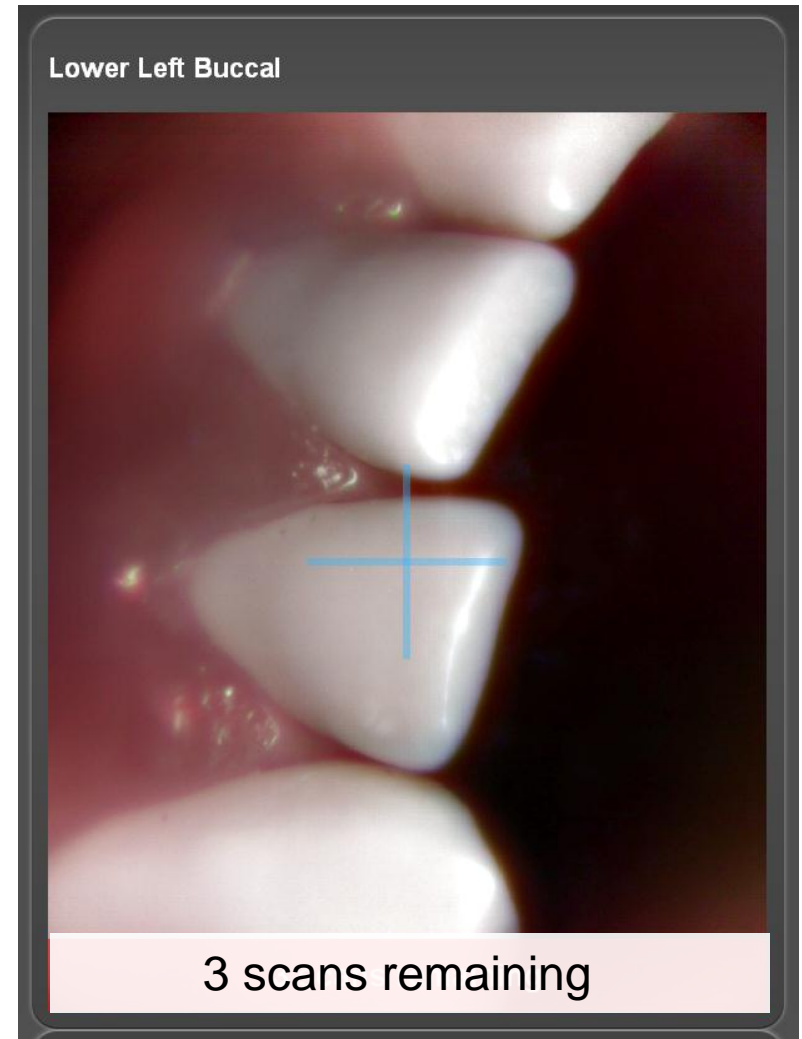


10/23/2012



Exception Messaging

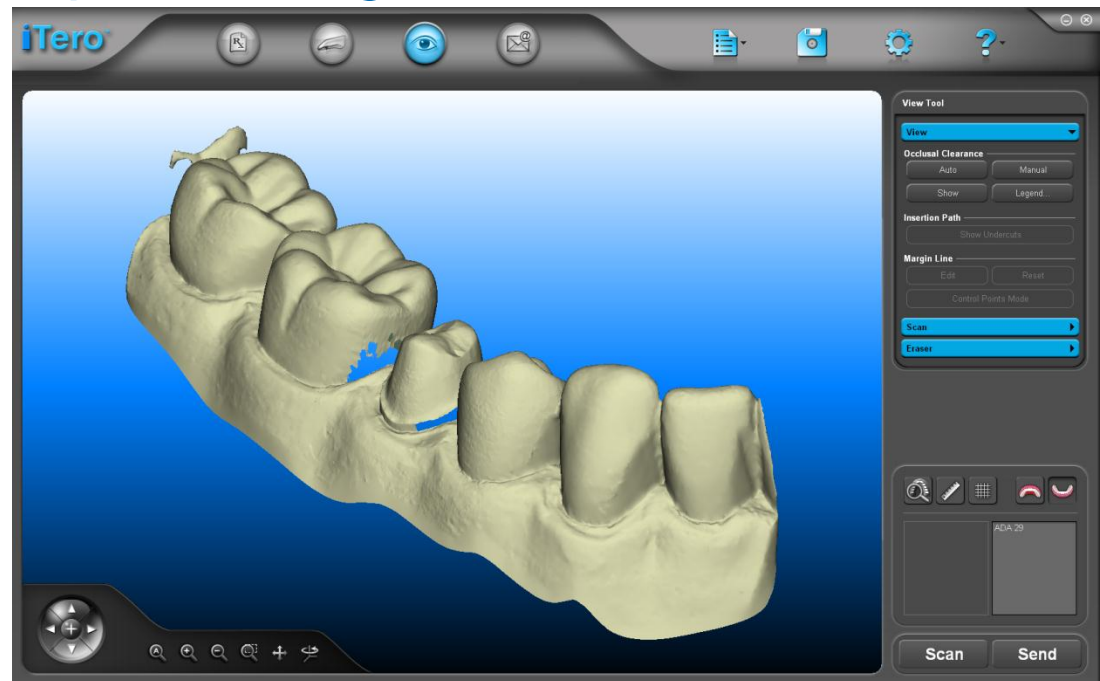
- **Scan Remaining Countdown**
 - Proactive countdown when 3 scans remain in segment



10/23/2012

Viewing of arch with preparation scans

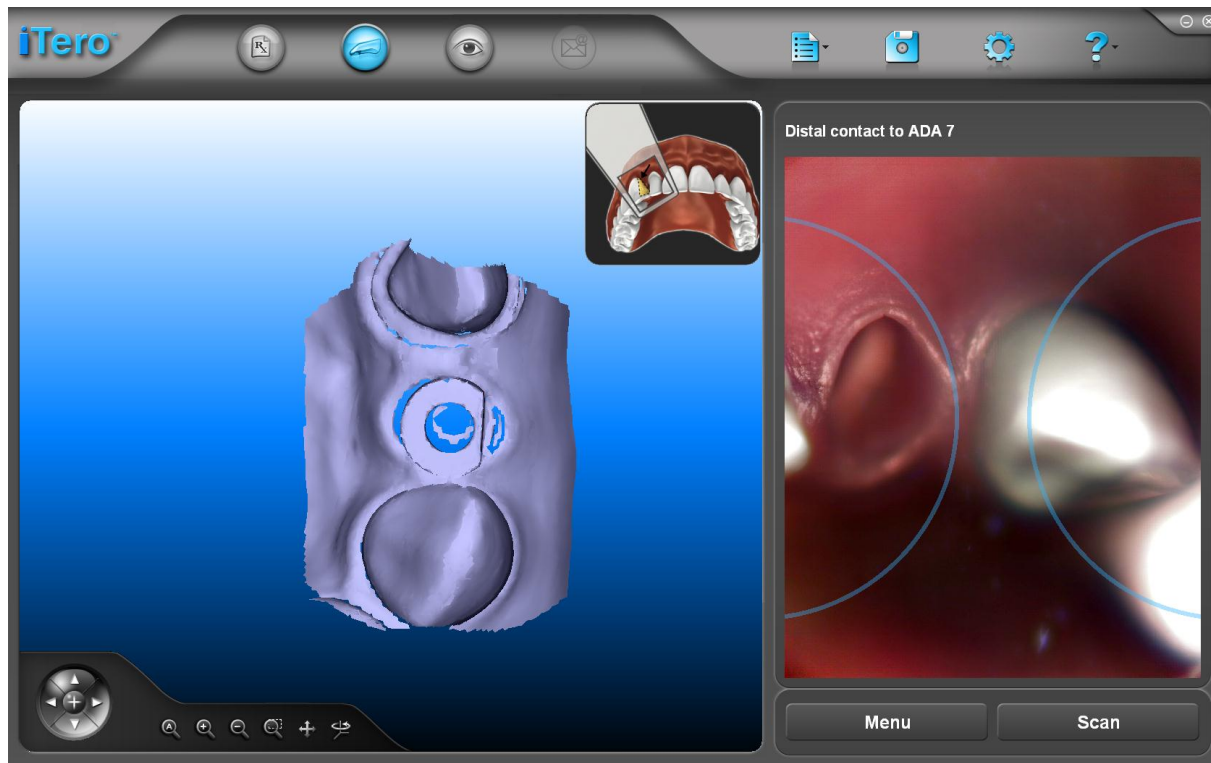
- Upon completion of the scan the system will show the high resolution model with the preparation scans. This will assist the user in identifying areas that may require additional scans to fill in the missing data prior to sending the case for processing



10/23/2012

Scanning Implants

- Capturing contacts when scanning implants
 - Due to the size of some scan bodies it can be challenging to scan the adjacent tooth contacts. The user may now remove the scan body when prompted to take the contact scans and leave it out for the remainder of the scanning protocol.



10/23/2012

MyAlignntech

- Sign in by using your email address and your password

MYALIGNTECH

iTero™ iOC™ OrthoCAD®

Email:

Password:



Remember username

[Forgot Your Password?](#)



[Invisalign Doctor Site >>](#)

[Not yet an Invisalign provider?](#)

See how other professionals are using Invisalign to satisfy their patients and grow their practices. [>>](#)

10/23/2012

MyAligntech

- On the Quick Start Page click on the orders tab



© 2012 Align Technology, Inc. All rights reserved. [Terms](#) | [Support](#)

10/23/2012

MyAligntech

• Check Status of Case

MYALIGNTECH iTero • IOC • OrthoCAD Beta [| Profile](#) [| Logout](#)

Orders

Home > Orders > Orders List

Clinical Orders List

Apply Reset Export

Company: **Align, Dental DDS (San Jose)** Date Range: 2012/04/25-2012/07/25

ID	Code	Patient Name	Ordered By Co	Ordered By	Ship To	Order Date	Acquisition Date	Due Date	Date Updated	State	Case Type	
5253759	5PAZ3H	Test	Test	Align, Dental DDS (San Jose)	Dr. Align Dental	Align Dental Lab	2012/07/1	2012/07/1	2012/07/1	2012/07/1	Scanning	Quadrant
5245444	5P29WR	Test	Test	Align, Dental DDS (San Jose)	Dr. Align Dental	Align Dental Lab	2012/07/1	2012/07/1	2012/07/1	2012/07/1	Order Registration	Quadrant
5236334	5NSV0F	Test	Test	Align, Dental DDS (San Jose)	Dr. Align Dental	Align Dental Lab	2012/07/1	2012/07/1	2012/07/1	2012/07/1	Align Production	Expanded
5236238	5NSRX6	Test	Test	Align, Dental DDS (San Jose)	Dr. Align Dental	Align Dental Lab	2012/06/14	2012/06/14	2012/06/28	2012/07/23	Doctor Review	Full Arch
5232127	5NMF9F	Test	Test	Align, Dental DDS (San Jose)	Dr. Align Dental	Align Dental Lab	2012/06/12	2012/06/12	2012/06/26	2012/06/14	VS Revision	Completed
5230074	5NJA2Z	Test	Test	Align, Dental DDS (San Jose)	Dr. Align Dental	Align Dental Lab	2012/06/11	2012/06/11	2012/06/11	2012/06/11	iQ tray Production	Invisalign

10/23/2012

Summary

- No changes have been made to the Rx form
- Same user interface design with updated features
 - Registration algorithm enhancements
 - Correcting of unregistered scans
 - Tooth positioning guide
 - Simplified foot pedal menu
 - New exception messaging
 - Viewing of arch with preparation scans
 - Removal of scan body to capture contacts
- MyAligntech
 - Quick tips for checking case status in MyAligntech

10/23/2012